

‘Poppy Fields’

The Installation Artwork on Tour

Created by Luxmuralis Artistic Collaboration
Working in Partnership with Lichfield Cathedral



In 2018 Lichfield Cathedral worked in partnership with ‘Luxmuralis’ an artistic collaboration who created ‘Poppy Fields’ art installation. Lichfield Cathedral hosted the installation successfully in 2016 and due to the extreme success of the event it was decided to take the installation on tour to other UK Cathedrals 2018 in commemoration of 100 years anniversary of the Armistice.

Poppy Fields was an installation artwork that transformed the sacred space of the Cathedral with Sound and light installation artworks, sculpture, and poetry enabling engagement with members of the public who may have never visited such sacred spaces before.

Artist Peter Walker and Composer David Harper created the artworks and through Son-et-Lumiere, sculpture and sound art pieces they transformed and reinterpreted the sense of place and space creatively helping members of the public to take a physical and emotional journey to identify with the subject and message of the artwork.

‘Poppy Fields’ was on tour at destinations during the month of Remembrance from October to November 2018. It was seen at Guildford Cathedral, St Albans Cathedral, Christ Church Oxford and Lichfield Cathedral in this period.

In 'Poppy Fields' the content was created to commemorate the anniversary of 100 years since Armistice. People attending the event were encouraged to reflect upon the consequences of war and conflict by taking a walking journey through bright poppy field projection art work engaging with the symbol of remembrance and then witnessing the regrowth of new life by walking through growing leaves that filled the pillars and architecture of the cathedrals interior. 16 million falling leaves were projected signifying the amount of lives lost each leaf and individual life represented. Poetry by WW1 authors was read and recorded by Oscar winning actor Eddie Redmayne OBE and the recordings were projected in each space as part of the artwork.



The installation artwork 'Poppy fields' also consisted of giant poppies being projected onto the Naves of the Cathedrals, with visitors invited to walk through the poppies and be immersed in the light and sound, the journey then contained around the Cathedral spaces with sound and light installation artwork and sculpture transforming the spaces of the Cathedrals - the south and north transepts, lady chapel areas and spaces that people could walk through and engage with in a different way to a normal visit to such space.



Poppy Fields Installation at Guildford Cathedral

A sculpture by Peter Walker representing the 'Pity of War' a tribute made to the nameless and voiceless who have lost their lives through conflict was also displayed as a point of reflection and interaction. Here people were asked to write a message or prayer on a leaf and place it by the sculpture. Visitors to the installation wrote messages of hope, dedications to lost love ones and family members who they knew fought in world wars.

Names of the local military regiments from the local roll of honour at each location were projected within a military chapel areas for people to read. Thousands of names scrolled through and people waited to witness particular names.



The Installation attracted thousands of people and gained national media attention featuring in the Daily Telegraph, and in local BBC television, news and radio in all locations.

Visitor numbers at each destination were as follows:

Guildford Cathedral attracted 2,000 attendees over two evenings

St Albans attracted 10,000 attendees over two evenings

Christ Church Oxford attracted 5,000 attendees over three evenings

Lichfield Cathedral attracted 4,500 attendees over three evenings

Examples of the many reactions and responses that were shared via social media :

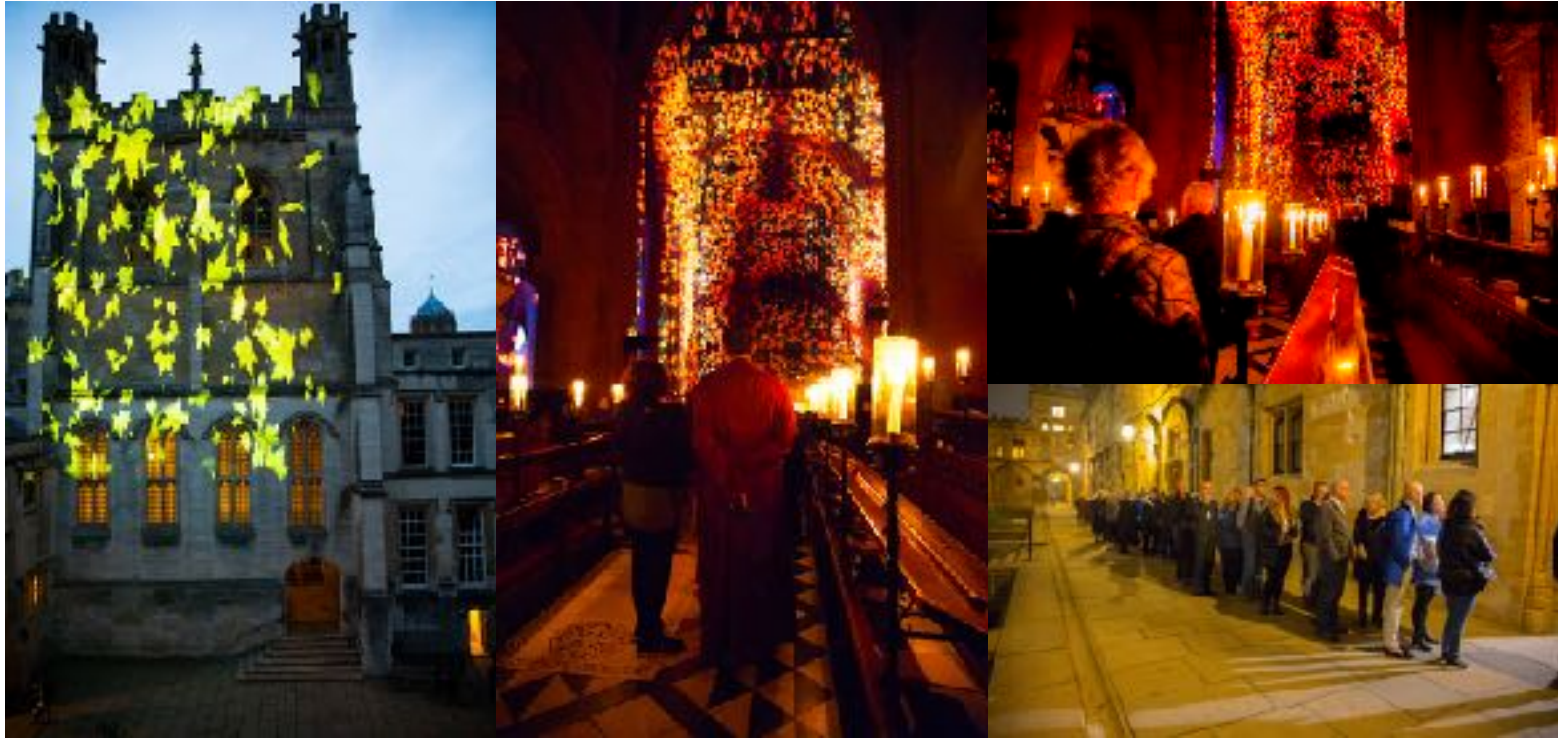
"Absolutely fantastic, so thought provoking simply beautiful!"

"Just visited the fantastic displays, very humbling. Amazing tribute to our fallen."

"Truly stunning, thank you"

"Just been to see this, it was fantastic and very moving."

Pictures of the Poppy Fields Installation at Christ Church Oxford



Pictures of the Poppy Fields Installation at Lichfield Cathedral

